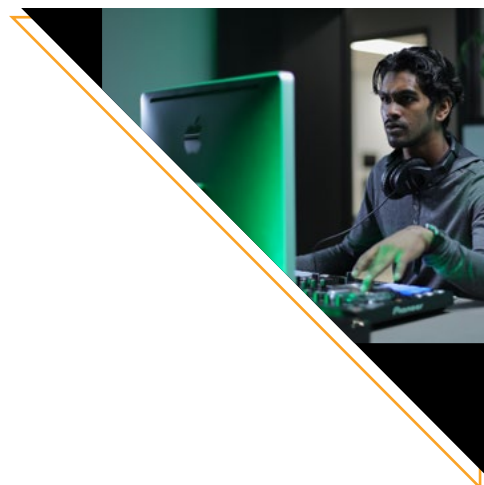




## **Pricelist & Entry Requirements**

International - 2023



# Pricelist (CAD) & Entry Requirements

International - 2023

Name of the program	Total Program Hours	Total Hours in class (Hours)	Length of Internship (Hours)	Tuition	Application Fee	Enrollment Fee	Total	Maximum Scholarship 2023	Total Tuition After Scholarship FY2023	Available Intakes
Show & Event Management (12hrs/wk)	540	450	90	\$9,164	\$50	\$200	\$9,414	\$0.00	<b>\$9,414</b>	January, May, September
Music Business Administration (12hrs/wk)	540	540	0	\$13,700	\$50	\$200	\$13,950	\$3,000	<b>\$10,950</b>	January, May, September
Sound Recording (12hrs/wk)	555	555	0	\$14,075	\$50	\$200	\$14,325	\$0.00	<b>\$14,325</b>	January, May, September
Live Sound (12hrs/wk)	540	450	90	\$13,700	\$50	\$200	\$13,950	\$0.00	<b>\$13,950</b>	January, May, September
Sound Design (12hrs/wk)	540	540	0	\$14,630	\$50	\$200	\$14,880	\$3,000	<b>\$11,880</b>	January, May, September
Film & Television Production (12hrs/wk)	555	555	0	\$14,630	\$50	\$200	\$14,880	\$3,000	<b>\$11,880</b>	January, May, September
Digital Marketing and Social Media (NEW) (12hrs/wk)	360	360	0	\$9,200	\$50	\$200	\$9,450	\$0.00	<b>\$9,450</b>	January, May, September
E-Commerce and On-line Business Management (20hrs/wk)	1110	975	135	\$28,000	\$50	\$200	\$28,250	\$12,000	<b>\$16,250</b>	January, April, July, September
Audio and Video Post Production (20hrs/wk)	1110	1110	0	\$32,000	\$50	\$200	\$32,250	\$10,000	<b>\$22,250</b>	January, April, July, September
Analytics, big data and business intelligence (NEW) (20hrs/wk)	1635	1305	330	\$32,000	\$50	\$200	\$32,250	\$12,000	<b>\$20,250</b>	January, April, July, September
Computer Security Analyst (NEW) (20hrs/wk)	1320	1110	210	\$30,000	\$50	\$200	\$30,250	\$12,000	<b>\$18,250</b>	January, April, July, September

## Terms & Conditions

- Please note that 2023 tuition fees will be applicable from August 1st, 2022 when applying for any of 2023 intakes.
- The total fees include tuition fees, registration fee, and international student fees. For more information, please refer to our website.
- For refund information, please refer to our refund policy.
- Fees are listed in Canadian dollars. Please note that bank charges may apply for refunds processed by bank transfer or international payment platforms (e.g. PayMyTuition).



# Pricelist (CAD) & Entry Requirements

International - 2023

## Entry Requirements

Under the provisions of section 4 of the College Education Regulations concerning the conditions of admission, a person who has received instruction considered sufficient by the college and meets any of the following conditions may be admitted to a program of studies leading to an Attestation of College Studies:

1. Secondary V diploma or its recognized equivalent;
2. The person has interrupted his or her full-time studies or pursued full-time postsecondary studies for at least 2 consecutive terms or 1 school year;
3. The person is covered by an agreement entered into between the college and an employer or by a government program of studies;
4. The person has interrupted his or her full-time studies for one term and pursued full-time postsecondary studies for one term; or
5. The person holds a Secondary School Vocational Diploma.

## Documents

All applications for admission must be accompanied by the following documents:

- Completed application form
- Non-refundable application fee of \$50 CAD and Admission fee of \$200 CAD
- Valid passport
- Birth certificate (certified copy)
- Most recent academic transcript or diploma

Any official documents issued outside Quebec must be a certified copy or the original. Documents written in a language other than English or French must be accompanied by an official translation.



# Pricelist (CAD) & Entry Requirements

International - 2023

A person applying for an ACS/AEC program must have sufficient written and spoken proficiency in the language of instruction. A person who has studied outside of Quebec must provide the result of a proficiency test for the language of instruction.

**For programs where the language of instruction of English, the language proficiency tests accepted are:**

- IELTS
- TOEFL
- PTE
- CEFR
- Cambridge English Language Assessment
- Duolingo
- CELPIP
- CAEL

**For programs where the language of instruction is French, the following standardized tests are accepted:**

- Diplôme approfondi de langue française/ Diplôme d'études en langue française
- (DELF)/(DALF)
- TEFaQ
- TCFQ

## Admissions Procedure

1. Provide required documents.
2. Pay the non-refundable admission fee (CAD \$50) and registration fee (CAD \$200), total CAD \$250.
3. Once requirements are met and accepted, Trebas Institute will issue a Letter of Admission (LOA).
4. Student must obtain a Québec Acceptance Certificate /Certificat d'Acceptation du Québec (CAQ).
5. Student must apply for a Study Permit (Canada).
6. Student must obtain a health and hospitalization insurance.
7. Enroll and start classes!

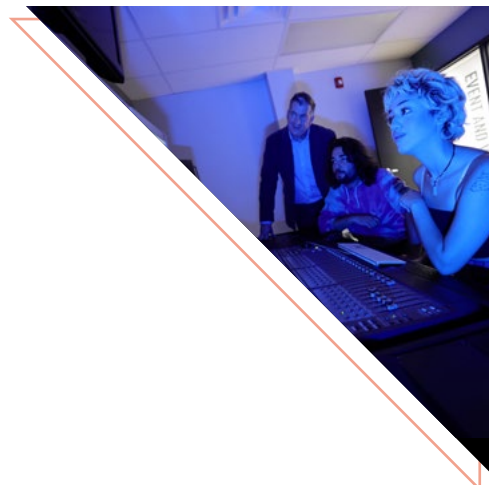
## Health Insurance

All international students must be covered by valid health insurance to study in Québec. Find out more by visiting the official website of the Régie de l'assurance maladie du Québec (RAMQ).

Take the first step towards your dream! Fill out a request for information form for more information about how you can study at Trebas Institute.

# Pricelist (CAD) & Entry Requirements

International - 2023



## How to apply

Email: [partners@trebas.com](mailto:partners@trebas.com)

Alternatively, speak to an advisor:

### Trebas Institute

Montreal Campus 550 Sherbrooke St West, Suite 600  
Montreal, Quebec,  
H3A 1B9

Phone: +1 (514) 845-4141  
[www.trebas.com](http://www.trebas.com)