



Ollscoil Chathair  
Bhaile Átha Cliath  
Dublin City University

A photograph of two students, a man and a woman, sitting at a desk and working on a laptop. The woman, in the foreground, has long brown hair and wears glasses and a striped shirt. She is looking at the laptop screen with her hand on her chin. The man, in the background, has dark hair and a beard, wearing a blue shirt, and is smiling while gesturing with his hands. The background is a bright, modern interior with large windows.

**POSTGRADUATE GUIDE**

**TAUGHT PROGRAMMES  
2022**





# Contents

Welcome from the President	02
Studying in Dublin	04
Why Go Further?	04
A Research Intensive University	05
Inspiring Academics	06
Graduate Stories	08
Employability and Career Development	11
International Community	12
Life at DCU	14
Our Campuses	15
Campus Facilities	16
Health and Fitness	18
Accommodation	19
Student Services and Supports	20
Entry Requirements	22
English Language Requirements	23
Applying to DCU	25
Postgraduate Programmes	25
Faculty of Humanities and Social Sciences	26
DCU Business School	28
Faculty of Science and Health	30
Faculty of Engineering and Computing	32
DCU Institute of Education	34
Finance and Funding	38
How to Get to DCU	39





# Welcome from the President

Welcome to DCU. We are a young, ambitious and innovative university with a mission to 'transform lives and societies'. We are proud to rank among the Top 100 of the world's young universities and among the top 2% of Higher Education institutions globally. DCU is ranked No. 1 in Ireland for Graduate Employment Rate, and 23rd worldwide, in the 2022 QS Employability Rankings.

The postgraduate programmes that DCU offers will allow you to develop the knowledge and skills you need to flourish in a fast-changing world. Whether you wish to move forward in your career, advance in an area you are passionate about, or change career paths completely, we have a course for you.

Our primary goal is to provide a 'transformative student experience' for everyone who attends the university. We are known for our innovative approach to Teaching and Learning, and for our teachers' personalised 'human touch' approach.



DCU is also known for its vibrant and diverse campuses. The university hosts more than 2,800 international students from 120 countries

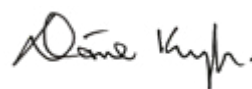
All of our programmes are based on world-class research. DCU is home to leading research centres in areas such as educational assessment and evaluation, bullying prevention, human rights, cellular biotechnology, neurotherapeutics, sensors, plasma technology, biomedical diagnostics, machine translation, cloud computing, and data analytics. DCU is a member of the European Consortium of Innovative Universities (ECIU) and of the Young European Research Universities Network (YERUN). Our partnership with Arizona State University (ASU) has led to the creation of Biodesign Europe, a centre focused on creating solutions to major challenges.

Since its foundation, DCU has benefitted from a dynamic and highly productive relationship with enterprise. Thanks to our close collaboration with a range of leading companies and organisations, we have been able to ensure that our programmes stay at the cutting edge, and are highly relevant to today's workplace.

DCU is also known for its vibrant and diverse campuses. The university hosts more than 2,800 international students from 120 countries. We can also proudly boast of our superb sports complex, our renowned performing arts centre, The Helix, and our state-of-the-art Student Centre, the U. More than 120 DCU student clubs and societies add greatly to a vibrant social environment.

I hope this prospectus gives you a clear picture of all that we offer our postgraduate students. I would particularly encourage you to read the testimonials of our graduates, who explain what postgraduate study at DCU has meant for them. You can also find a wealth of additional information and content at [www.dcu.ie/postgrad](http://www.dcu.ie/postgrad).

Thank you for exploring DCU and I hope I will have the opportunity to welcome you here in person, in the near future.



**Professor Daire Keogh**  
President, Dublin City University



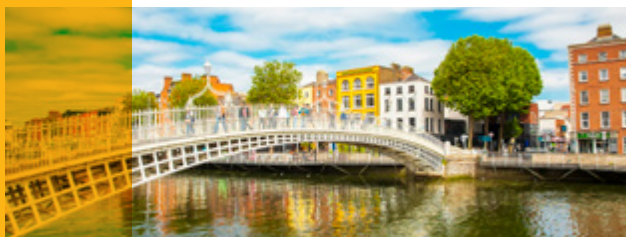
# Studying in Dublin

Whoever you are and wherever you are from, the city of Dublin probably doesn't need much introduction.



From its museums and galleries, to its historical landmarks, it is rich with history. From its bars, nightclubs and music venues, to its cutting edge range of cafes and restaurants, it is very much part of the 21st century. The skyline comprises an eclectic mix of Croke Park Stadium, Saint Patrick's Cathedral, The Custom House, Convention Centre, Ha'Penny Bridge, Spire of Dublin and so much more.

Dublin provides a great venue for your success. With the most distinctive of Irish identities, it is also very much part of Europe. Whilst there are a whole variety of metropolitan experiences, it's on the threshold of a rural idyll. At DCU, our three very different, but complementary campuses provide a tranquil environment away from the hustle and bustle of city life. However you choose to engage with the city, the Dublin Bus, DART and LUAS transport systems will get you around quickly, safely and cheaply.



## Why go further?

Some people undertake postgraduate studies to obtain that professional accreditation. Others do so because they are passionate about an issue and postgraduate research provides the structured, supportive environment in which to follow that passion.

Whatever programme you choose, our dedicated academic staff will inspire you to discover new ways of thinking about your subject. Our academics and

research teams are innovators making a global impact and addressing the major challenges facing the world today, and you will be part of that journey here at DCU. Throughout your programme, our careers service will be on-hand to guide you through postgraduate job opportunities. We provide the very best facilities and support to ensure that you get what you want out of your postgraduate experience. Whatever your reason to go further, go further with DCU.





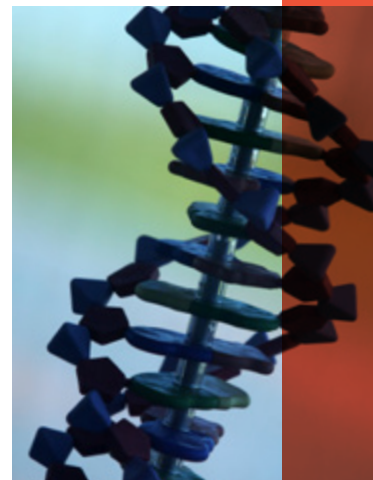
# A Research Intensive University

Research and Innovation at DCU stems from the academic excellence of its five faculties, coupled with a passion for translating knowledge into innovations for economic and societal benefit.

We recognise that international collaboration is essential in order to make significant and sustained advances in tackling some of the major research challenges facing the world today. We promote and support international research collaboration while also taking particular account of geo-political developments.

Here at DCU we bring together world-leading multi-disciplinary teams of researchers, capable of addressing significant challenges to generate innovative solutions, and who have access to world-class infrastructure and facilities.

DCU has several specialised research centres and hosts others that involve collaborations with other higher education institutions and industry.



# Inspiring Academics



**Prof Maura Mc Adam**  
**DCU BUSINESS SCHOOL**

Maura is a full Professor of Management and the first Director of Entrepreneurship at Dublin City University. Maura is a nationally and internationally recognized scholar within the area of entrepreneurship having particular expertise in gender, entrepreneurial leadership, technology entrepreneurship, and family business. Accordingly, her research has been published in top-rated North American and UK journals. In addition, Maura has authored the book 'Female Entrepreneurship' and co-authored the book "Entrepreneurial Behaviour" and is currently leading a €1m EU/IRC funded project investigating gender inequalities in the entrepreneurial ecosystem.

Maura is an experienced entrepreneurship educator and her use of innovative teaching practices has been recognized in her receipt of several teaching awards including more recently the 2019 Irish Women's Award for her Services to Education. Maura has held Visiting Professor Positions at Massey University, New Zealand and Babson College, Boston and is currently a Visiting Professor at the University of Nottingham, UK and Princess Nourah Bint Abdulrahman University, Saudi Arabia. Maura is a regular commentator on female entrepreneurship, women in leadership, accelerators and women in family business, on radio and in print.

## **Dr Monica Ward** **FACULTY OF ENGINEERING AND COMPUTING**

Dr Monica Ward as an inspiring academic. She is chair of the Irish Network for Gender Equality in Computing and is a world-leading researcher from the School of Computing.

Monica has extensive experience in teaching and assessing a range of subjects from technical to transversal skills and pioneered the use of technology in education and she advocates a co-creation and culturally-responsive approach with academics and students. Her research interests include Computer Assisted Language Learning with a special focus on Less Commonly Taught Languages and Endangered Languages and Human Factors in Computing. Monica is very approachable and is always happy to lend a helping hand to students and colleagues alike.

## **Dr Susan Hegarty** **FACULTY OF HUMANITIES** **AND SOCIAL SCIENCES**



Dr Susan Hegarty is a physical geographer and the Head of DCU's School of History and Geography, with a keen interest in the interplay between humans and the environment we inhabit and use. Susan's enthusiasm for the natural world is infectious and you may recognise her from her role as presenter of RTÉ's Building Ireland series, where her energy and passion was undeniable. Susan has taken part in a number of documentary series on both Irish and British television channels and is involved in a number of citizen science projects looking at water quality in Ireland.

Her research focuses on citizen science for monitoring water quality, and on the evolution of the Irish landscape and our use of that landscape. The Associate Professor has researched the role of the Quaternary ice-sheets on this landscape and the role Quaternary sediments play in the vulnerability of water sources to pollutants. She is also interested in the exploitation of Irish mineral resources in the nineteenth century. Susan believes fieldwork is an integral part of the training of geography students, and promotes field studies within undergraduate geography. She is a Senior Fellow of the Higher Education Academy and she is also one of the principal investigators with DCU's Water Institute.



## **Prof Deirdre Butler** **DCU INSTITUTE OF EDUCATION**

Deirdre Butler, is a Full Professor at the Institute of Education, Dublin City University.

Deirdre qualified from St Patrick's College, Drumcondra and prior to being a teacher educator worked as a primary school teacher, a mathematics resource teacher, a teacher for the travelling community and held the post of vice-principal at St Finian's National School, Newcastle Lyons, Co Dublin.

Deirdre's passion in life is exploring what being digital in learning can mean and what skills or competencies are needed to live and thrive in today's complex globally connected world.

She is driven by discovering how using digital technologies can revolutionise learning, examining how we learn and questioning our assumptions about "traditional" models of schooling, as well as the design and development of innovative sustainable, scalable models of teacher professional learning. Deirdre has extensive experience of managing a range of projects, school-based initiatives and has established campus innovative learning spaces (i.e. Minecraft Studio / Lego Education Innovation Studio. These initiatives all focus on creative uses of digital technologies to inform the development of a shared language to describe the learning processes embedded in using a



wide palette of digital technologies for learning, teaching and assessment.

Currently Deirdre is Expert Advisor to the Irish Department of Education as they develop the next iteration of the Digital Strategy for Schools to 2027.

## **Dr Jennifer Gaughran** **BSc, PhD, Assistant Professor, School of Physical Sciences** **DCU FACULTY OF SCIENCE AND HEALTH**

Dr Jennifer Gaughran is an Assistant Professor in the School of Physical Sciences in DCU. Jennifer undertook a BSc in Physics with Astronomy in DCU, graduating in 2011 and decided to stay in DCU after her degree, to do her PhD on 'point-of-care' diagnostics. The idea is to develop a system where you put a drop of blood from a patient on a small chip. The chip is designed to detect something in that blood - maybe a particular infection or a molecule that tells us something about the person's health or disease. Jennifer's PhD was on the technology to underpin that.

When she finished her doctorate, Jennifer moved to the Isle of Man and taught physics in a secondary school for six months, before returning to DCU in 2016 and spending a year managing the Advanced Processing Technology (APT) research centre. Since 2017 Jennifer has been working as an Assistant Professor in the School of Physical Sciences in DCU, where she is the Programme Chair of the BSc in Physics with Biomedical Sciences and is building her own research group at the University, including supervising PhD students. Jennifer's new research is still using the 'microfluidic' chips, and is now looking at how nanomaterials can help to make the systems even better at detecting disease.



Jennifer is also working with a group in DCU who are investigating new ways of making compostable, lab-grade bioplastics using waste from the food and drinks industries in Ireland. The goal is to provide viable alternatives to single-use plastics, and encourage the more sustainable, environmentally-friendly use of plastics in laboratories.



**Cathal Dunne**  
 MSc Management Business  
 DCU Business School

I completed the MSc Management – Business (MSBM) in August 2020. After graduating, I took up a short-term role analysing financial transactions for AIB (as an external contractor with Accenture). In April of this year, AIB made the decision to move the project internally, so I moved over and now have a permanent role as a data quality analyst.

I would summarise my postgraduate experience as being tough but very rewarding. There is a lot of coursework to be completed with regular deadlines, but it was good for me because it helped me build a stronger work ethic. Fortunately, there are great resources available to help students too. I got exactly what I wanted from the masters degree – a strong qualification and a clearer picture of my future career.

Elements of the course were self-directed learning, so I was able to spend a lot of time working on specific projects and courses in data analytics. These were helpful for getting a job as they strengthened my CV and gave me lots to talk about in interviews.

Also, with the solid grounding in the essentials of business, I feel like a much more confident and well-rounded professional than I did before. I had previously worked in hospitality and as a TEFL teacher, so the masters helped me massively in bridging the gap to working as an analyst.

Throughout the masters, there is plenty of opportunity to gain experience in different areas. We are also given an hour a week out of our workday to develop any relevant skills.



## **Aaron Gallagher**

### **MA in Social Media Communications**

#### **Faculty of Humanities and Social Science**

**Winner of Best Feature in FAI Communication Awards**

I learned a great deal during my Master's and it definitely gave me a massive boost during the early stages of my career. I completed my undergraduate with a BA in Journalism and worked for almost three years as a sports journalist while completing the masters. In April 2019 I was named on SportforBusiness.com's annual 30 Under 30: Young Leaders of Tomorrow. In July, I won Best Feature at the FAI Communication Awards. However, I was motivated to broaden my horizons and seek a slightly different path in the worlds of communications, marketing and public relations. Thanks to the skills I learned during my MA, I was hired by Ryanair to be their Digital Executive. In this role I had the pleasure to travel across Europe to countries like Georgia, Armenia, Italy and the UK on a number of digital content campaigns. I was also nominated for 'Rising Star' at the 2020 Irish Content Marketing Awards. Having the MA in Social Media Communications made a huge difference when it came to taking on more senior positions at big companies like Ryanair. Thanks to my work as a sports journalist and Ryanair over the past few years, I have also recently been awarded a PhD scholarship with DCU's School of Communications to examine the relationship between sporting organisations, athletes and the media.

## **Paul Mahon**

### **MSc in Education and Training Management (E-Learning)**

It's hard to convey in a few short sentences just how great the Master's in Education and Training Management (eLearning) really is! As a nurse and educator, I wanted to do a programme that would bring out my creative side, and give me the knowledge and skills to further eLearning in my organisation. The MEME programme certainly fulfilled that brief!

The learning I gained from the Master's helped me lead the hospital's postgraduate education team to move to remote teaching during the first wave of Covid-19, and to produce a number of educational and morale-boosting videos. From a personal perspective, having a Master's in eLearning has helped me secure a promotion, but more importantly it has taught me to think differently and bring some creativity to what I do.

Having completed Level 9 programmes before I can honestly say this was the first one I truly enjoyed. That is completely due to the thought that the faculty have put in to ensuring an open, interactive, and hands-on learning environment where learning from classmates with various professional backgrounds is as important as learning from lecturers with a wealth of knowledge and personal experience! The support I received during this programme was second to none, so much so that I have published some of my assignments and continued my learning as a PhD student.

I would encourage anyone to stop thinking about applying and just apply!



## Amy Russell, MSc in Psychology and Wellbeing DCU Faculty of Science and Health

When I completed my undergraduate degree in Psychology, I knew that I wanted to continue my education. When choosing my Masters programme, I wanted to ensure I was investing in the best possible training in order to help me pursue a career in psychology. The MSc in Psychology and Wellbeing stood out among other Masters programmes in Ireland due to the range of topics covered as well as the coverage of research and understanding the evidence base. The unique focus on wellbeing is so important in all walks of psychology and I feel that having this qualification has given me a competitive edge. Given that I want to go on to do professional training this was really important to me.

I am now working towards my goal of gaining a place on an Educational Psychology doctorate programme and am working as an Assistant Educational Psychologist. Along with my applied experience, the training I received on the MSc Psychology and Wellbeing has been key to getting me to this point. The focus on wellbeing through the lifespan as well as the opportunity to focus on research areas within my specific area of interest has really helped to deepen my knowledge base of research and practice. While my specific interest is in Educational Psychology, my classmates are all pursuing different paths now (like Clinical Psychology or research careers) and that is what is so beneficial about the MSc in Psychology and Wellbeing - it fits lots of different specialisms and you can make it what you want by focusing on what research interests you.



I was delighted to recently have the systematic review that I completed as part of the Masters accepted for publication and once I have completed the revision, I am really looking forward to seeing my work published!

The staff of the School of Psychology have been incredibly supportive through providing excellent teaching, supervision and advice. I use the skills and knowledge that I gained through the MSc in Psychology and Wellbeing every day in the work that I do. Deciding to work towards a professional qualification in psychology means committing to a long and sometimes arduous process. Although this pre-professional Masters was tough work, I am incredibly glad that I took this step and am very proud of all that I have achieved along the way.



## Shane Phelan MEng Telecommunications Engineering Faculty of Engineering and Computing

Lead Engineer at Iamus Technologies and has worked on RTE's Big Life Fix. He is a BEng, MEng and PhD graduate from the School of Electronic Engineering. Take a look at a project he worked on [here](#).

# Employability and Career Development

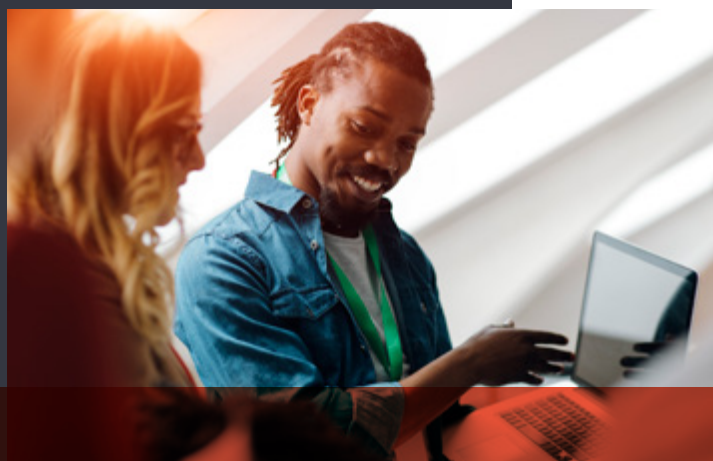
DCU Careers Service is here to help you build on the knowledge, expertise, and confidence you gain through your postgraduate study so that you can develop your employability skills and effectively manage your career progression.

DCU graduates continue to be highly sought-after by top national and international employers. Our award-winning Careers Service empowers you to connect with employers, develop your career management skills and navigate your career.

Career and Professional Development opportunities include:

- Skills Sessions on topics such as Careers Pathways; Job Search Techniques; Application Process; Interview Preparation
- Jobs Board advertising a wide variety of opportunities with companies ranging from local SMEs to large global corporations
- Career Clinics and Consultations
- Employer Events including presentations, career fairs and networking sessions
- Access to a comprehensive range of online, podcasts and self-directed resources

Whether you plan to enter the workplace, transition to new roles, build your own career through entrepreneurship or avail of opportunities in emerging areas, the Careers Team will work with you to enable and empower you to successfully navigate your future career as well as future changes and opportunities within the world of work.



A photograph showing three students in a library. Two female students in the foreground are looking at a laptop, while a male student is visible in the background. They are surrounded by bookshelves and study materials.

# International Community

Whether you're from Ireland, the EU or further afield, here at DCU you'll be living and working with people from all over the world.

We have a large number of students and academics from international backgrounds, so your learning and teaching experience will place you in a truly international and stimulating environment. Studying here at DCU will open up new opportunities for you, introduce you to a global network of friends, and enable you to experience many different cultures.

## The International Recruitment Team

The International Recruitment Team is here to answer any questions and provide you with assistance as you prepare to come to DCU. The team offers a broad range of guidance and support which will help to make the application process and the overall student experience at DCU enjoyable. Please do not hesitate to contact them at [international.office@dcu.ie](mailto:international.office@dcu.ie) and they will be happy to help!

## Student Support and Development

During the academic year, workshops and other events are organised in order to help you adapt to study and research at a high academic level in a new education system. Details can be found at: [dcu.ie/students](https://dcu.ie/students)







## Immigration Regulations and Visa Requirements

The Department of Justice, Equality and Law Reform provides information for students wishing to apply for study visas in Ireland. For more information, visit: [irishimmigration.ie](https://irishimmigration.ie)

## Scholarship Information

DCU offers International Student Scholarships. You can find further details and application information at: [dcu.ie/international/dcu-international-scholarships](https://dcu.ie/international/dcu-international-scholarships)

The Irish Council for International Students provides useful information for students interested in studying in Ireland and in Study Fellowships, which are available for students from certain countries. For more information, visit: [internationalstudents.ie](https://internationalstudents.ie)

The Irish Government, through the Government of Ireland Scholarship scheme, provides up to 60 scholarships per year. Further details can be found at: [hea.ie/funding-governance-performance/funding/student-finance/other-finance-bursaries-scholarships](https://hea.ie/funding-governance-performance/funding/student-finance/other-finance-bursaries-scholarships)

## Working in Ireland while studying

International students attending a full-time course of at least one year's duration leading to a qualification recognised by the Minister for Education register with **Immigration Service Division** and are granted Stamp 2 immigration permission. If you have a Stamp 2 you are entitled to take up part-time employment in Ireland during your studies. Please note that international students who hold 'Stamp 2A' permissions will not be permitted to work in Ireland, this includes single semester students.

Stamp 2 entitles you to undertake part-time work for up to 20 hours per week during term time, and up to 40 hours casual full-time work per week from December 15 to January 15 and between June 1 and September 30, once this does not interfere with your attendance at university. These dates are subject to change. Please check the Irish Immigration Service Division and ICOS Ireland websites for the most up-to-date information.

In order to work in Ireland you will need to get a Personal Public Service Number (PPS Number), but you need to have evidence of a job offer to secure one. The first step is to find work, and then apply for a PPS Number. You can find out more from the Citizens' Information website.

## Working in Ireland after you graduate

International students who complete an undergraduate degree at DCU can apply for the Third Level Graduate Programme (Stamp 1G). Stamp 1G allows you to work in Ireland for **12 months** from the date of issue of final results.

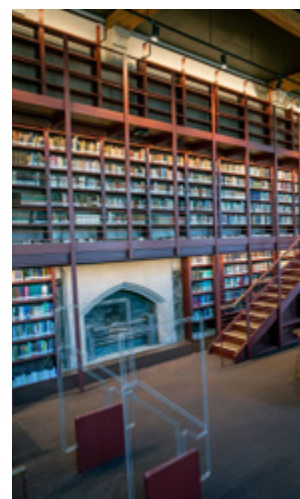
International students who complete a Masters Degree, a Post-Graduate Diploma or a PhD can obtain Stamp 1G to remain in Ireland for up to **24 months** after they graduate. Full details can be found at: [irishimmigration.ie](https://irishimmigration.ie)



# Life at DCU



We have a unique and vibrant culture on our campuses close to Dublin city centre. We provide state-of-the-art study facilities for your studies and everything else you need for a healthy, fun and active student life.





↑ St Patrick's Campus

# Our Campuses

DCU is a multi-campus university with three academic campuses – DCU Glasnevin, DCU St Patrick's and DCU All Hallows. The DCU St Patrick's campus is home to Ireland's first and only university Institute of Education. There is a 20-25 minute walk between the DCU Glasnevin and DCU St Patrick's campuses (also accessible via public transport links) and a 3 minute walk between DCU St Patrick's and DCU All Hallows campuses.



↑ Glasnevin Campus



← All Hallows Campus



# Campus Facilities



## Libraries

As a postgraduate student at DCU you will have access to three world class libraries; one on DCU Glasnevin campus with one on DCU St Patrick's campus and a new library in Woodlock Hall on the DCU All Hallows Campus.

Our libraries incorporate study spaces, research hubs, meeting spots and focal points for discovery and creativity.

Everyone learns differently, which is why the libraries provide a wide variety of technology-rich study spaces, from chatty open plan areas to quiet individual and collaborative study zones.

The libraries also provide access to a huge range of print resources and support services to help you successfully complete your programme.

In addition, our website acts as a portal to a vast collection of electronic resources: e-books, e-journals, databases, theses and newspapers; all available 24/7 (internet connection required off campus).

To find out more about our libraries, visit: [dcu.ie/library](https://dcu.ie/library)



## Eating and drinking

The University has plenty of places to grab a bite to eat, or meet friends for a coffee. The DCU Glasnevin campus has seven restaurants/cafes located in various parts of the campus, the DCU St Patrick's campus has three venues to choose from with two venues available in the DCU All Hallows campus. For further information on locations and menus, visit: [dcu.ie/catering](https://dcu.ie/catering)



## Security at DCU

DCU has its own private Security Service which aims to provide a safe and comfortable environment for staff and students at all times. For individual campus security information, visit: [dcu.ie/students/az/security](https://dcu.ie/students/az/security)

## SafeZone at DCU

If you are working late or studying alone, you have access to a free app service to give round-the-clock safety reassurance to staff and students.

SafeZone is a simple-to-use app that is designed to allow students and staff to summon security or safety assistance via mobile devices, desktops and laptops. For more information and to download the app, visit: [dcu.ie/ocoo/faqs](https://dcu.ie/ocoo/faqs)

## Pharmacy

Pharmhealth Pharmacy is situated at the heart of the DCU Glasnevin campus. The pharmacy is open to students, staff, local residents and visitors and opens 8.30am to 6.30pm Monday to Thursday and from 8.30am to 6.00pm on Friday.

## The Helix

The Helix is a multi-purpose venue located on DCU Glasnevin campus providing a wide range of entertainment events including music, comedy, ballet, theatre, family shows and much more. Special discounted rates for students are offered for some shows – for details call in, check out the website or phone.

W: [thehelix.ie](https://thehelix.ie)





# Health and Fitness

You want to be part of a university that encourages physical wellbeing and a healthy lifestyle. We want you to have the opportunity to enjoy all the benefits of exercise, fitness, dance and sport while you study with us.

DCU Sports Complex, located on the DCU Glasnevin campus, is a state-of-the-art facility, incorporating health, wellness and sports to meet all your exercise and leisure needs. Membership is available to DCU students on an academic, yearly, or half yearly rate with membership including access to the pool, spa facilities, fitness centre and group fitness classes.

DCU Sports Arena, also located on the DCU Glasnevin campus, hosts a number of sports, such as super league basketball, badminton, volleyball and can facilitate a number of other activities. We also have a climbing wall, two squash courts, a racquetball/handball court and several studios. There are multiple sports grounds, a high performance centre and a soccer centre.

The DCU St Patrick's campus has a number of sports facilities including a fitness studio, two sports halls, a GAA pitch and a soccer pitch.





# Accommodation

College Park, located on the DCU Glasnevin campus, offers a dedicated block of accommodation for taught postgraduate students, available on a 9 month occupancy licence (September - May).

As a Postgraduate student, there are two separate types of rental contracts on offer which would fall in line with the length of enrolled studies, whether 9 months or 50 weeks.

## 9 Month Accommodation

9 month rental contracts which fall in line with the academic calendar (September-May) are offered across both our Glasnevin and All Hallows campuses.

Based in Glasnevin, our College Park Postgraduate accommodation is based within the superior double ensuite blocks. Here, each unit comprises 5 double ensuite bedrooms with both WiFi and fixed line internet access. The rooms also come inclusive of a study desk and chair, wardrobe and shelving unit and bedframe with mattress. Each apartment unit has a shared kitchen and living area to be used by all five residents.

In addition, there are a limited number of rooms available on a 9 month occupancy licence on DCU All Hallows campus. All Hallows is situated in Drumcondra village within easy reach of the DCU Glasnevin and DCU St Patrick's campuses by foot, bicycle or public transport. There are 63 bedrooms available in Purcell House, on the All Hallows campus to students at all levels of study. Accommodation here is a mixed offering of both single and double bedrooms (single occupancy only) with either ensuite or shared bathroom facilities. Each bedroom has a study area, WiFi and fixed line internet access (internet cable not provided) as well as a bedframe with mattress and wardrobe/storage area. There is a large communal kitchen and shared lounge areas.

## 50 Week Accommodation

Based on a length of study from August-August, students are welcomed to our Postgraduate accommodation blocks on the Glasnevin campus. Here, there are 37 apartment units of varied size from one bedroom up to 5 bedrooms (each individual bedroom is ensuite). Each unit has its own kitchen and living area to be shared between tenants.

The accommodation is let on a 50 week licence only, the majority of rooms being let as single bedrooms, however a limited number of double rooms are also available.

For more information on DCU accommodation, visit:

[dcuaccommodation.ie/accommodation/postgraduate-students](https://dcuaccommodation.ie/accommodation/postgraduate-students)



# Student Services and Supports



## Student Advice Centre

The Student Advice Centre is the hub for all information on student supports at DCU. We offer advice and guidance on all areas, from settling in to university to exam preparation and financial assistance. Students can make a one-to-one appointment or drop in to see a Student Advisor.

We also offer life coaching on a one-to-one basis or through the Pathways to Success programme. For further information, visit: [dcu.ie/advice](https://dcu.ie/advice)

## Student Health Service

The Student Health Service provides on-campus primary healthcare to students of DCU. We take care of the physical, psychological and social aspects of student health and offer a range of activities within the area of health promotion. For further information, visit: [dcu.ie/health](https://dcu.ie/health)

## Counselling and Personal Development Service

We provide a professional and confidential Counselling and Personal Development Service which is available to all registered postgraduate DCU students. The service is staffed by counselling psychologists/ psychotherapists and psychotherapists at an advanced stage in training. We offer one-to-one counselling, professional crisis support and expert advice on a range of personal and psychological health and developmental issues. For further information and to register with the service, visit: [dcu.ie/counselling/counselling-service-how-make-appointment](https://dcu.ie/counselling/counselling-service-how-make-appointment)

## Disability and Learning Support

Our aim is to promote equality of access for learners with disabilities, specific learning difficulties, mental health difficulties and on-going medical conditions. In line with best practice guidelines, we coordinate a range of supports for students who are registered with the service to ensure they have equity of access to their studies. For further information, visit: [dcu.ie/disability](https://dcu.ie/disability)

## Discover DCU

Discover DCU is a series of ten short interactive courses designed to help get you settled in and introduce you to the tools and skills you need to success at university. Work through each of the courses at your own pace and complete the simple activities to finish each course. For further information, visit: [dcu.ie/library/online-tutorials-learning-materials](https://dcu.ie/library/online-tutorials-learning-materials)



## Learning Support

DCU's Learning Support service offers a range of workshops and one-to-one meetings to help students with various aspects of learning at third level. We also offer extensive online resources, which can be found at:

[dcu.ie/studentlearning](https://dcu.ie/studentlearning)

**Loop**, DCU's virtual learning environment, compliments face-to-face teaching at DCU and provides flexible access to programmes on and off campus. Lecturers can use Loop to direct you to resources such as lecture notes, video clips, podcasts, online journals, practice quizzes and discussion forums.

## Students' Union

The Students' Union is an essential part of college life. DCUSU is widely renowned for providing opportunities, helping create change, facilitating at a local and national level as well as organising famous events on and off campus, creating memories you will always have with friends you will never forget. Our approachability is key for you the student when things go wrong, when things are going great and indeed when you just need someone to talk to on anything from welfare to academic issues. For further information, visit:

[dcusu.ie](https://dcusu.ie)

## Postgraduate Society

The DCU Postgraduate Society aims to promote Postgraduate student life and community, both within and outside of DCU. It is a social club for everyone involved in Postgraduate study. It acts as a platform to exchange ideas, share knowledge and organise social events.

## Careers Service

See page 11 for information on DCU's award winning Careers Service or visit:

[dcu.ie/careers](https://dcu.ie/careers)

## International Office

See page 12 or visit:

[dcu.ie/international](https://dcu.ie/international)

## Spirituality

The Chaplaincy team plays a significant role in building up a sense of community on campus and are available to listen to and support students. The Interfaith Centre is the focal point of religion and spirituality, a place where people of diverse cultural and religious backgrounds meet to chat over a free cup of tea or coffee, pray or take some quiet time. There is a Sacred Space for religious celebrations or group gatherings, a Quiet Room for relaxation and prayer, Muslim prayer rooms and meeting rooms for small student groups and societies.

## Crèche

The Magic Days crèche in DCU provides a professional day-care service for the infants and young children of DCU students and staff. Located adjacent to car park no. 2 on the Glasnevin campus, the crèche caters for 55 children and is open from 8.15am-6.10pm Monday to Thursday and 8.15am-5.45pm Friday. The Student Support and Development office in DCU offers a crèche subsidy to lone parents who are full-time students. For further information, please contact Ciara Fitzgerald or Sharon Kelly.

**E [creche@dcu.ie](mailto:creche@dcu.ie)**

## Car Parking

There are four main car parking facilities available on the DCU Glasnevin campus for staff, students and visitors to the University providing just under 1400 spaces. DCU St Patrick's and DCU All Hallows campuses have limited parking capacity with both requiring a valid DCU Parking Permit. For further information and car park rates, visit:

[dcu.ie/students/parking](https://dcu.ie/students/parking)

## Computer Services

Information Systems and Services (ISS) provide computing and networking facilities for use by students of DCU. As a student of DCU, you will be provided with free wireless internet all over campus, 7GB+ of email storage in your DCU account, online document storage, shared access to hundreds of desktop computers across campus, printing facilities and many other services. For further information, visit:

[dcu.ie/iss](https://dcu.ie/iss)





# Entry Requirements



In general, the entry requirement for all taught graduate programmes is a primary degree of at least Second Class Honours standard from a recognised university or degree awarding body. In some cases, approved equivalent qualification from a recognised professional body will suffice.

As part of the selection process an interview may be required.

Exceptionally, candidates not possessing the above entry qualification may be admitted provided that they can demonstrate exceptional aptitude or ability and/or substantial relevant work experience in a field related to the programme.

Detailed entry requirements and specific guidance and information relating to academic and other requirements associated with the programme are available in each of the programme descriptors on our website. Prospective applicants for a specific graduate taught programme should consult the online prospectus:

# English Language Requirements for non-Native Speakers of English

In the case of all applications, evidence **MUST** be provided of competence in the English language. Details of the minimum standard neededThe list below indicates the minimum standards in English language for entry into undergraduate and postgraduate courses at DCU.

Postgraduate Courses	
Examination	Level Required
Irish Leaving Certificate English	Ordinary Level Grade D3
GCE A Level English Language	Grade D
IELTS	Composite score of 6.5 or above, with no less than 6.0 in any one component
TOEFL	237 (computer-based test) 580 (paper-based test)
TOEFL iBT	Total Score of 92
Cambridge Certificate of Proficiency in English (CAP)	Overall score of 180 with a minimum of 169 in all components
Cambridge Certificate of Advanced English (CAE)	Overall score of 180 with a minimum of 169 in all components
English Test for Academic and Professional Purposes (ETAPP)	Grade C1
Pearson test of English (PTE Academic)	63 (with a minimum of 59 in all components)

Your English language certificate must be awarded within two years of the start date of your DCU programme.

In certain circumstances, results in examinations other than those outlined above may be accepted as proof of competence in English language. This is the case, for example, for students who have successfully achieved a H7 or D3 grade or higher in an English examination which is deemed by DCU to be the equivalent of GCE A-Level examinations and for non-native speakers of English who have completed their education through the medium of English in a native English-speaking country. Please include the details of any English language examinations and proof of successful completion when applying to DCU.





# APPLYING TO DCU

## Postgraduate Taught Programmes

Unless stated otherwise in the Programmes section of the guide, candidates seeking admission to all full-time and part-time postgraduate taught programmes must apply online through DCU's Student Application Portal which can be accessed [here](#)

Applicants can apply for up to three taught programmes or one research programme when making an application to DCU.

Programmes should be selected in order of preference as sequential processing and assessment of programmes means that if an applicant is offered their first choice no further assessment of the other programmes is made. The cost of applying is €50 and is a non-refundable fee payable to DCU.

You can upload documentation relevant to your application through your account. Certified copies of the supporting documentation e.g. transcripts, must be submitted within 14 days of completing the online form.

On receipt of the application fee, your application will be available to view on the system. Applicants are notified by email as each step of the review route is progressed. It is, therefore, imperative that applicants have a secure email account and review it regularly for updates, as no other means of communication between DCU and prospective applicants will be used.

## Closing Dates for Applications

EU and Non-EU applications to full-time and part-time postgraduate taught programmes should note that each programme has an initial date indicating when applications should be submitted. Applications may be reviewed before or after the submission date. While initial submission dates are set for all programmes, a faculty may extend these submission dates. Also, some programmes are offered on a modular or web basis so that applications can be taken any time.

Please note that all Postgraduate programmes offered through DCU have entry requirements. In addition to qualifications some require additional information and applicants are asked to familiarise themselves with their programme(s) of choice before making an application. For details on the current submission dates applicable to postgraduate taught programmes please refer to the programme of interest on our website: [dcu.ie/courses](https://dcu.ie/courses)

## Other Application Routes

Some postgraduate taught programmes require direct application to DCU. For further information on the application procedure for these programmes, visit: [dcu.ie/courses](https://dcu.ie/courses)

For further information or assistance with your application please contact our Student Enrolment Team in our Registry at:

T +353 (0) 1 700 5338

E [postgraduateadmission@dcu.ie](mailto:postgraduateadmission@dcu.ie)

# FACULTY OF HUMANITIES AND SOCIAL SCIENCES

DCU's Faculty of Humanities and Social Sciences has seven schools and is the largest faculty in the university, offering 25 postgraduate degrees. Our courses are modern, interactive and challenging, taught by experts with strong links to industry who always have their fingers on the pulse of what's happening in the real world. Plus our state of the art facilities are second to none, with a brand new media studio plus multimedia and language labs with the latest technology. Our students often enjoy the benefit of expertise from more than one school and discipline such as the MSc in Climate Change: Media, Politics and Society where students gain expertise delivered from both our School of Communications and the School of Law and Government. Many of our postgraduate courses are also accredited by relevant professional bodies. On a global scale, the faculty ranks within the top 200 universities worldwide for Arts and Humanities as well as in the top 200 across many disciplines including: History, Philosophy, Theology, Languages, Literature, Linguistics, Politics, International Relations, Communications & Media Studies. Furthermore, our School of Law and Government is Law School of the Year as voted at the 2021 Irish Law Awards, DCU is ranked no.1 in Ireland for Communications and Media Studies and DCU's Fiontar agus Scoil na Gaeilge is the largest Irish department in the country.

## PART TIME PROGRAMMES

Programme	Duration	Commencement Date	Course Code
LLM (Master of Laws) - new offering type	Two Years	September	DC661
MA i Léann na Gaeilge – new programme	Two Years	September	DC687
MA in Children's and Young Adult Literature	Two Years	September	DC696
MSc in Climate Change: Policy, Media and Society	Two Years	September	DC679
MA in Creative Writing	Two Years	September	DC785
MA in Data Protection and Privacy: Law and Computing	Two Years	September	DC787
MA in Ethics	Two Years	September	DC688
MA in Ethics (Corporate Responsibility)	Two Years	September	DC689
MA in European Law and Policy	Two Years	September	DC698
MA in History	Two Years	September	DC678
MA in International Relations	Two Years	September	DC609
MA in International Security and Conflict Studies	Two Years	September	DC630
MA in Political Communication	Two Years	September	DC604
MA in Social Media Communications	Two Years	September	DC642
MA in Theology and World Religions	Two Years	September	DC694
MA in Translation Studies	Two Years	September	DC738

MSc sa Bhainistíocht agus Gnó Digiteach	One Year	September	DC627
MSc in Public Policy	Two Years	September	DC649
MSc in Science and Health Communication	Two Years	September	DC607
MSc in Translation Technology	Two Years	September	DC731

## FULL TIME PROGRAMMES

Programme	Duration	Commencement Date	Course Code
European Master in Law, Data and Artificial Intelligence	Two Years	September	DC625
International Master in Security, Intelligence and Strategic Studies (IMSISS)	One Year	September	
LLM (Master of Laws)	One Year	September	DC662
MA i Léann na Gaeilge	One Year	September	DC686
MSc in Climate Change: Policy, Media and Society	One Year	September	DC669
MA in Creative Writing	One Year	September	DC784
MA in Data Protection and Privacy: Law and Computing	One Year	September	DC786
MSc in Emerging Media	One Year	September	DC605
MA in European Law and Policy	One Year	September	DC697
MA in History	One Year	September	DC677
MA in International Relations	One Year	September	DC608
MA in International Security and Conflict Studies	One Year	September	DC629
MA in Journalism	One Year	September	DC600
MA in Political Communication	One Year	September	DC631
MSc in Public Policy	One Year	September	DC648
MSc in Public Relations and Strategic Communications	One Year	September	DC674
MA in Refugee Integration	One Year	September	DC663
MSc in Science and Health Communication	One Year	September	DC606
MA in Social Media Communications	One Year	September	DC614
MA in Theology and World Religions	One Year	September	DC693
MA in Translation Studies	One Year	September	DC615
MSc in Translation Technology	One Year	September	DC700

Research Studies (including Masters by Research and PhD studies) can be found on the research section of the Faculty of Humanities and Social Sciences website -

[dcu.ie/humanities-and-social-sciences/research-faculty-humanities-social-sciences](https://dcu.ie/humanities-and-social-sciences/research-faculty-humanities-social-sciences)



# DCU BUSINESS SCHOOL

We are a double accredited, internationally focused business school, whose globally ranked Master's Degrees offer clear routes to career progression in a wide range of business areas. Our internationally respected academic faculty have thought leadership, industry experience and deep, active, research expertise that ensures our courses stay at the cutting edge. And our classroom environment allows a rich exchange of real world business experience and problem solving that is equally valuable.

We will match your ambition and career goals with an exceptional specialist business education that will allow you to progress confidently to the next stages of your career.

## PART TIME PROGRAMMES

Programme	Duration	Commencement Date	Course Code
MSc in Management of Operations	Two Years	September	DC910
Executive MBA	Two Years	September	DC951
MSc in Emergency Management	Two Years	September	DC956
MSc in Investment, Treasury and Banking	Two Years	September	DC958
MSc in Management (Aviation Leadership)	Two Years	September	DC519
MSc in Talent, Leadership and HR Strategy	Two Years	September	DC503
MSc in Work and Organisational Psychology/ Behaviour	Two Years	September	DC957



## FULL TIME PROGRAMMES

Programme	Duration	Commencement Date	Course Code
MSc in Accounting	One Year	September	DC501
MSc in Digital Marketing	One Year	September	DC516
MSc in Electronic Commerce (Business)	One Year	September	DC506
MSc in Finance	One Year	September	DC511
MSc in Human Resource Management	One Year	September	DC632
MSc in Global Management (Digital Disruption)*	One Year	September	DC527
MSc International Accounting and Business	One Year	September	DC526
MSc in Management (Aviation Leadership)	One Year	September	DC525
MSc in Management (Business)	One Year	September	DC510
MSc in Management (Strategy)	One Year	September	DC514
MSc in Insight and Innovation	One Year	September	DC528

\* The MSc in Global Management (Digital Disruption) is unique in its format and can be studied through three paths:

1. Full-time one year programme completed at DCU Business School. This programme confers a single MSc degree from DCU (apply through PAC – PAC course code).
2. Spend semester one in either Universidad de las Americas Puebla in Mexico, Università Cattolica del Sacro Cuore (UCSC) in Italy or Goodman Business School at Brock University in Canada before coming to DCU in semester two. This programme confers a single MSc degree from DCU (apply at [ipbsmgm.com](http://ipbsmgm.com))
3. Spend one semester in DCU and either ESB Business School at Reutlingen University, Germany OR NEOMA Business School in Reims, France (apply at [ipbsmgm.com](http://ipbsmgm.com))

Research Studies (including Masters by Research and PhD studies) can be found on the research section of the DCU Business School website at: [business.dcu.ie/phd-programme](http://business.dcu.ie/phd-programme)

# FACULTY OF SCIENCE AND HEALTH

Are you curious about the behaviours that drive our physical world? Is your appetite whetted by scientific discoveries that push the boundaries of our existence? Are you driven to work with individuals and communities to ease the burden of illness and maximise health and wellbeing?

## Welcome to the Faculty of Science and Health.

A place to discover, problem solve, experiment and explore. An inclusive environment that serves to innovate and inspire. Our internationally recognised centre of excellence thrives on the enthusiasm and dynamism of its people.

Our Mission is to foster and deliver education, research, and professional and practice development in science and health that is of national and international significance. Together the Schools and Centres provide a unique set of synergies to advance education and research in science and health and to support DCU to pursue its goals to transform lives and society. Staff in the Faculty have strong links to industry and also work closely with a range of community, health, and education organisations within the local community.

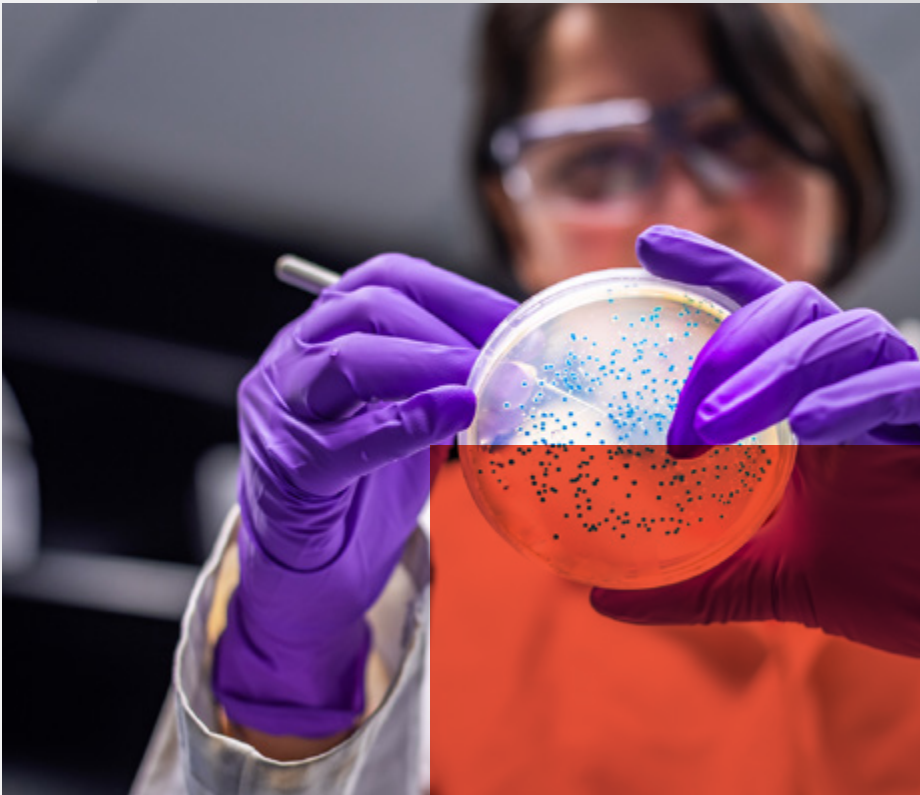
## PART TIME PROGRAMMES

Programme	Duration	Commencement Date	Course Code
Graduate Certificate in Relationships and Sexuality Education for People with Intellectual Disability	One Year	September	DC675
Graduate Certificate in Sexuality Education and Sexual Wellbeing	One Year	September	DC676
Graduate Certificate in Dermatology	One Year	September	DC741
Professional Diploma in Clinical Supervision	One Year	September	DC768
MSc in Psychotherapy	Four Years	September	DC715
MSc in Child and Family Health and Wellbeing (subject to accreditation)	Two Years	September	DC771
MSc in Health and Social Inclusion (subject to accreditation)	Two Years	September	DC746
MSc in Astrophysics and Relativity	Two Years	September	DC743
MSc in Bioprocess Engineering	Two Years	September	DC734
MSc in Diagnostics and Precision Medicine	Two Years	September	DC740
MSc in Financial Mathematics	Two Years	September	DC761
MSc in Psychology and Wellbeing	Two Years	September	DC766
MSc in Elite Sport Performance	Two Years	September	DC702
Doctorate in Elite Performance (Sport)	Four Years	September	DCD44
Doctorate in Psychotherapy	Four Years	September	DCD13



FULL TIME PROGRAMMES

Programme	Duration	Commencement Date	Course Code
Programme	Duration	Commencement Date	Course Code
MSc in Bioprocess Engineering	One Year	September	DC735
MSc in Diagnostics and Precision Medicine	One Year	September	DC739
MSc in Financial Mathematics	One Year	September	DC704
MSc in Astrophysics and Relativity	One Year	September	DC742
MSc in Psychology (Conversion)	One Year	September	DC767
MSc in Psychology and Wellbeing	One Year	September	DC765
MSc in Health and Social Inclusion (subject to accreditation)	One Year	September	DC745



# FACULTY OF ENGINEERING AND COMPUTING

The Faculty is home to three Schools and hosts or participates in a number of large scale research centres. We offer degree programmes at Bachelors, Masters and PhD levels, while online Level 9 courses are now enabling those in employment to upskill in areas such as Artificial Intelligence and the Internet of Things. Our graduates continue to be highly sought after by industry, and their continued employability is assured through the Faculty's ever deepening links with industry partners and an evolving curriculum that allows real-world work experience, industry-led team challenges and global engagement in line with DCU's internationalisation strategy.

The Faculty of Engineering and Computing offers a supportive, innovative learning environment in classes and tutorials and our students benefit from real engagement with our research active staff, in both contexts, while enjoying the experience of lab based environments. Overall, we continue to commit ourselves to strive for ever more innovative approaches to teaching and learning, and, in doing so, to bring about a meaningful transformation in the lives of our students, alumni and the broader society.

## PART TIME PROGRAMMES

Programme	Duration	Commencement Date	Course Code
Access Course for the MEng in Mechanical and Manufacturing Engineering Programme	One Year	September	DC812
Masters Engineering Qualifier B – MEng	One Year	September	DC838
in Mechanical and Manufacturing Engineering			
Masters Engineering Qualifier - Electronic and Computer Engineering	Two Years	September	DC847 (FT) DC830 (PT)
		February	DC848 (FT) DC831 (PT)
MEng in Electronic and Computer Engineering	Two Years	September	DC883(FT) Sep DC884 (PT) Sep
		January	DC891 (FT) Jan DC892 (PT) Jan
MEng in Mechanical and Manufacturing Engineering	Two Years	September	DC814(FT) DC816 (PT)
MSc in Computing (with Major Options)	Two Years	September	DC836 (FT) DC837 (PT)
MA in Data Protection and Privacy Law	Two Years	September	DC786 (FT) DC787 (PT)
Single Module Programme - Engineering and Computing	For more information: <a href="http://www.dcu.ie/">www.dcu.ie/</a> DC808		DC808 (Sep) DC809 (Jan)

## FULL TIME PROGRAMMES

Programme	Duration	Commencement Date	Course Code
Masters Engineering Qualifier- Electronic and Computer Engineering	Continuous	September	DC847 (FT) DC830 (PT)
		February	DC848 (FT) DC831(PT)
MEng in Electronic and Computer Engineering	One Year 18 Months	September	DC883 (FT)Sep DC884 (PT)Sep
		January	DC891 (FT) Jan DC892 (PT) Jan
MSc in Electronic and Computer Technology	One Year	September	DC896 (FT) Sep
		January	DC895 (FT) Jan





# DCU INSTITUTE OF EDUCATION

The DCU Institute of Education is the newest faculty of Dublin City University and is based in DCU St Patrick's Campus, Drumcondra. Established in 2016 as Ireland's first university faculty of education, it has a staff of more than 140 full-time academics, an administrative team of 30 and a student body in excess of 4,000. The Institute brings together students of education across all sectors from early childhood, to primary and post-primary, and further and higher education. As well as providing a range of undergraduate programmes in education, the Institute offers a rich menu of taught and research-based postgraduate programmes, at doctoral, masters, diploma and certificate levels.

As a centre of expertise and excellence in teacher education and education more generally, the Institute hosts a range of research centres in key areas of priority and has an ambitious and growing programme of research. With internationally-recognised experts in education policy, inclusive and special education, curriculum and pedagogy, assessment, literacy, evaluation and teacher education, the Institute provides a dynamic learning and working environment. As one of the world's leading young Universities, DCU has established its fifth and newest faculty out of a conviction that studies and research in education and the preparation and support of teachers are central to the transformation of lives and communities.

## PART TIME PROGRAMMES

Programme	Duration	Commencement Date	Course Code
Graduate Certificate in the Education of Pupils on the Autism Spectrum	One Year	September	N/A
MSc in Education and Training Management (Leadership)	Two Years	September	DC900
MSc in Education and Training Management (eLearning)	Two Years	September	DC902
MSc in Guidance Counselling	Two Years	September	DC906
Graduate Diploma in Guidance Counselling	1.5 Years	September	DC908
Master of Education in Autism	Two Years	September	DC972
Professional Diploma in Inclusive and Special Education (ISE)	Two Years	September	DC979
MA in Chaplaincy Studies and Pastoral Work	Two Years	September	DC981
Graduate Diploma in Inclusive Education, Learning Support and Special Education	One Year	September	N/A
Master of Education	Two Years	September	DC984
Masters in Special Educational Needs	Two Years	September	DC994
Certificate in Religious Studies	One Year	September	DC996

FULL TIME PROGRAMMES

Programme	Duration	Commencement Date	Course Code
Professional Master of Education (Post Primary Education)	Two Years	September	DC905
Professional Master of Education (Primary Teaching)	Two Years	August	DC970
MA in Chaplaincy Studies and Pastoral Work	One Year	September	DC980









# Finance and Funding

## Postgraduate Fees

Separate fees are set for each programme. Fees are payable for each academic year, or each stage of your programme. Students are liable to pay revised fees annually for the duration of the programme. For current fee information, visit: [dcu.ie/fees/postgraduate-fees-2022-23](https://dcu.ie/fees/postgraduate-fees-2022-23)

## Fees for International Students

For information on international student fees (non-EU entrants), visit: [dcu.ie/international/international-student-fee-payments-international-office](https://dcu.ie/international/international-student-fee-payments-international-office)

## Grants and Scholarships

Postgraduate students can continue their Higher Education Grant or apply for one if they satisfy the means test and have not completed another postgraduate course. For more information on maintenance grants, visit: [studentfinance.ie](https://studentfinance.ie)

Faculties also run individual scholarships for certain taught postgraduate programmes. For further information, visit: [dcu.ie/graduatestudies/scholarships-opportunities](https://dcu.ie/graduatestudies/scholarships-opportunities)

## Research Councils

Research Councils are a major source of financial support for EU students wishing to register for postgraduate research degrees. However, funding for certain taught programmes is occasionally available. For more information, visit: [research.ie](https://research.ie)

## Sponsorship From Your Employer

If you are working and want to study part-time, some employers may help you with your course fees, or by offering flexible working.

**Please note that the information contained in this prospectus is correct at time of print.**

**For updated information on all postgraduate programmes at DCU, visit: [dcu.ie/courses](https://dcu.ie/courses)**



DCU Glasnevin campus is just a short distance from Dublin city centre, Dublin Airport and both the M50 and M1 motorways. The campus is walking distance to both the DCU St Patrick's campus and DCU All Hallows campus which are located in Drumcondra. All campuses are well serviced by public transport. Along with the regular public bus services there are three Semester only routes to and from DCU – 31d (Baldoye to DCU), 42d (Portmarnock / Malahide to DCU) and 70d (Dunboyne to DCU). There are also daily private bus services from Dundalk, Bettystown and Drogheda to DCU (Matthews Coaches) and Monaghan to DCU (Collins Coaches).

Please check regularly on our website for transport updates:  
[dcu.ie/how-to-get-here](https://dcu.ie/how-to-get-here)



# How to Get to DCU



## Dublin Bus Routes

### See map for key to bus numbers

#### No. 1 DCU Helix (Stop #7571)

- 31d** DCU (Helix) to Baldoyle via Collins Avenue, Howth Road, Dublin Road, Strand Road [Bus departs Baldoyle at 7.45am (arriving DCU at 8.35am) and will depart DCU at 5.15pm] (term-time only)
- 44** DCU (Helix) to Enniskerry via city centre and Dundrum
- 42d** DCU (Helix) to Portmarnock via Collins Avenue, Ballymun Road, M50, M1, Holywell, Swords Road, Yellow Walls Road, Malahide Village, Blackwood Lane, Wendell Avenue, Strand Road [Bus departs Portmarnock at 7.30am (arriving DCU at 8.40am) and will depart DCU at 5.10pm] (term-time only)
- 70d** DCU (Helix) to Dunboyne via Ballymun Road, Griffith Ave Extension, Finglas Road, Ballyboggan Road, Rathoath Road, Nephin Road, Navan Road, Castleknock Road, Blanchardstown Village, Clonee [Bus departs Dunboyne at 7.15am (arriving DCU at 8.30am) and will depart DCU at 5.05pm] (term-time only)
- 104** DCU (Helix) to Clontarf via Beaumont Hospital, Donnycarney and Vernon Ave [DART link for Clontarf DART station]
- 220** DCU to Mulhuddart via Blanchardstown

#### No. 2 Ballymun Rd (Stop #37 on DCU side, towards city centre and stop #4680 opposite DCU away from city centre)

- 4** Harristown to Monkstown Ave via city centre
- 9** Charlestown to Limekiln Ave, Walkinstown via city centre
- 11** Wadelai Park to Sandyford Ind Est via city centre
- 13** Harristown to Grange Castle Business Park, Clondalkin via city centre
- 155** IKEA (Ballymun) to Bray Rail Station via city centre

#### No. 3 Collins Ave (stop #135021)

- 109A** Bus Éireann: From city centre (Busáras) to Kells

#### No. 4 Whitehall (Stop #1642)

- 1** Santry (Shanard Rd), Sandymount via city centre
- 33** Balbriggan to city centre via Swords Road (Collins Ave Ext)
- 41 (A, B, C)** Swords to city centre via Swords Road/Dublin Airport (41 only)

#### No. 5 Whitehall, Swords Road

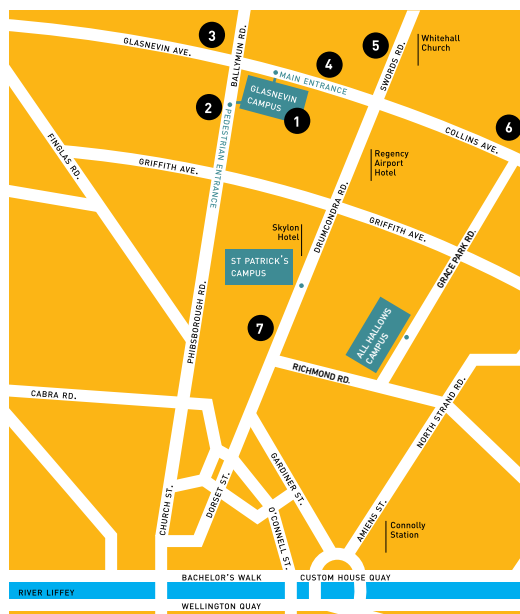
- 101** Bus Éireann: From city centre (Busáras) to Drogheda 909/900
- Matthews Coaches: From city centre (Cumberland St Nth) to Dundalk

#### No. 6 Collins Ave Ext (Stop #215 (towards Dublin Airport) #237 towards city centre)

- 16** Dublin Airport to Ballinteer (Kingston)

#### No. 7 Drumcondra Rd Upper (stops #21/#7602 (away from city centre)/ stops #45/#7603 (towards city centre))

- 1** Santry (Shanard Road) to Sandymount via city centre
- 11** Wadelai Park to Sandyford Ind Est via city centre
- 13** Harristown to Grange Castle Business Park, Clondalkin via city centre
- 16** Dublin Airport to Ballinteer (Kingston)
- 33** Balbriggan to city centre via Swords Road (Collins Avenue Extension)
- 41 (A,B,C)** Swords to city centre via Swords Road/Dublin Airport (41 only)
- 44** DCU (Helix) to Enniskerry via city centre and Dundrum



## DUBLIN BUS ROUTES ([www.transportforireland.ie](http://www.transportforireland.ie))

### Servicing Glasnevin Campus

1, 4, 9, 11, 13, 16, 17a, 31d, 33, 41, 41a, 41b, 41c, 42d, 44, 70d, 104, 220, 155

### Servicing St Patrick's and All Hallows Campuses:

1, 11, 13, 16, 33, 41, 41a, 41b, 41c, 44

## NIGHT LINK

- 33N** Westmoreland St to Balbriggan (drop off at Drumcondra/Santry)  
**88N** Westmoreland St to Ashbourne (drop off at Glasnevin Ave or Ballymun Civic Centre)  
**41N** Westmoreland St to Swords Manor (drop off at Drumcondra/Whitehall, opposite Whitehall Church)

## BUS ÉIREANN ROUTES

- 101** Drogheda, Balbriggan, Dublin via Swords Road (Collins Ave Ext)  
**109A** Dublin Airport/city centre, Ashbourne, Ratoath, Dunshaughlin, Navan, Kells  
**126** Naas to DCU (Collins Ave)

## MAINLINE/COMMUTER TRAINS

Drumcondra Train Station (approx 10/15 mins walk north along the Drumcondra Road to DCU St Patrick's and All Hallows Campuses and approx 25/30 mins walk to the Glasnevin Campus)

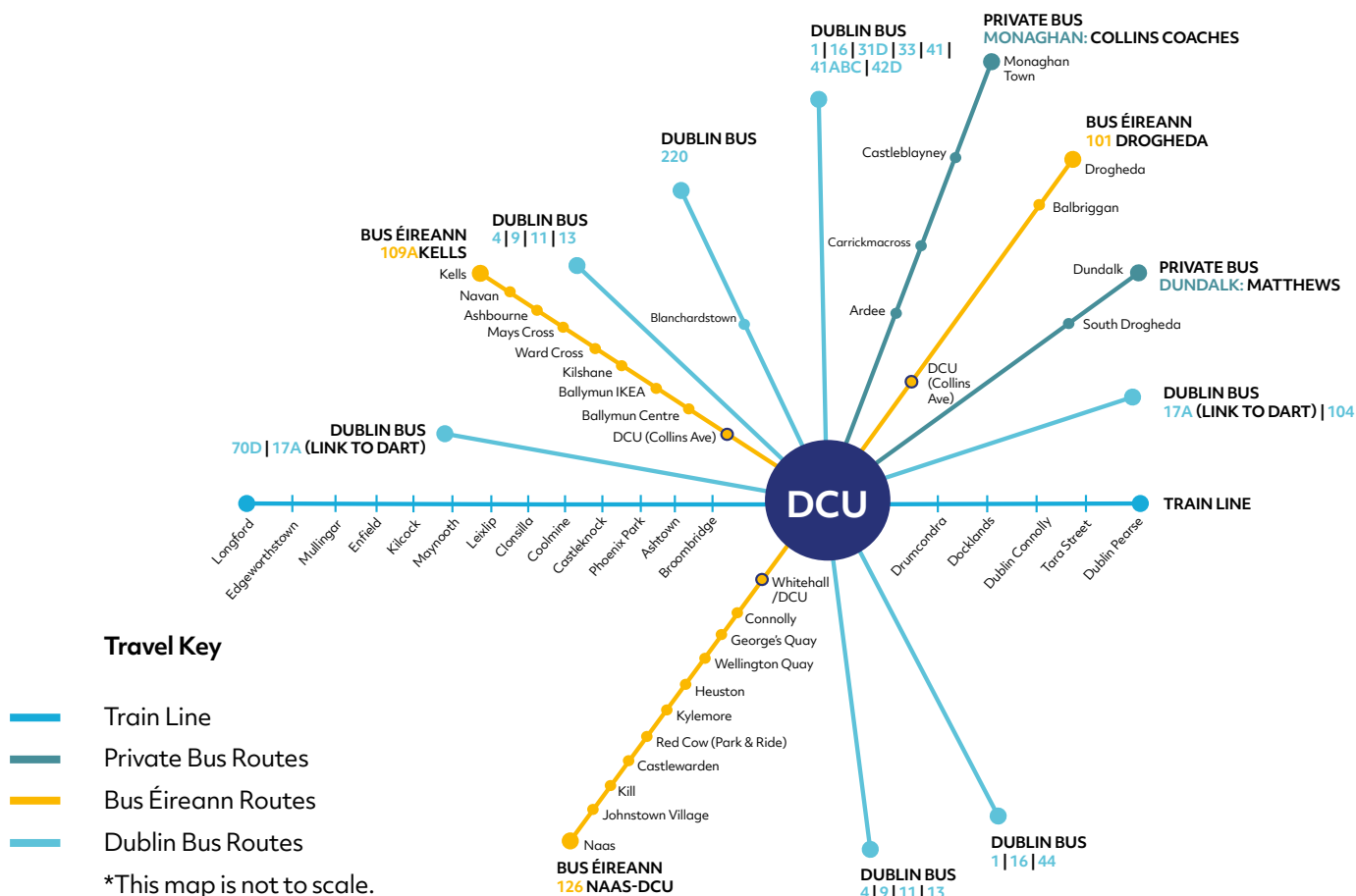
Direct connections to Drumcondra from both Dublin Connolly and Dublin Heuston train stations

### Commuter Direct Routes via Drumcondra

Between Maynooth/Leixlip and Dublin Pearse Station

Between Newbridge/Naas/Sallins and Dublin Grand Canal Dock Station

For further information and timetables use the Irish Rail Journey Planner: [www.irishrail.ie](http://www.irishrail.ie)



**Private Bus Routes** - (Please check service providers' website for exact details as times may change from semester to semester)

**Matthews Coaches:** [www.matthews.ie](http://www.matthews.ie)

**Route 1:** Dundalk/Drogheda – DCU Glasnevin campus (direct) (term-time only).  
 Departs Dundalk 7.15am, Drogheda 7.45am, arrives DCU Glasnevin campus 8.00am. Departs DCU Glasnevin Campus at 5.15pm

**Route 2:** Bettystown, Laytown, Dublin (Swords Road)

**Route 3:** Dundalk, Drogheda, Dublin (Swords Road)

**Collins Coaches:** [www.collinscoaches.ie](http://www.collinscoaches.ie)

Monaghan Town to DCU Glasnevin campus via Castleblayney, Carrickmacross, Ardee. Departs Monaghan 6.30am, arrives DCU Glasnevin campus 8.30am. Departs DCU Glasnevin campus daily at 5.15pm

*Information about buses/trains is correct at time of going to print.*

For admissions enquiries:  
[postgraduateadmission@dcu.ie](mailto:postgraduateadmission@dcu.ie)  
+353 (0) 1 700 5338  
[dcu.ie](http://dcu.ie)

For general enquiries:  
[studenthelp@dcu.ie](mailto:studenthelp@dcu.ie)

 /dcu

 /DublinCityUni



Purposefully different,  
consistently excellent

